



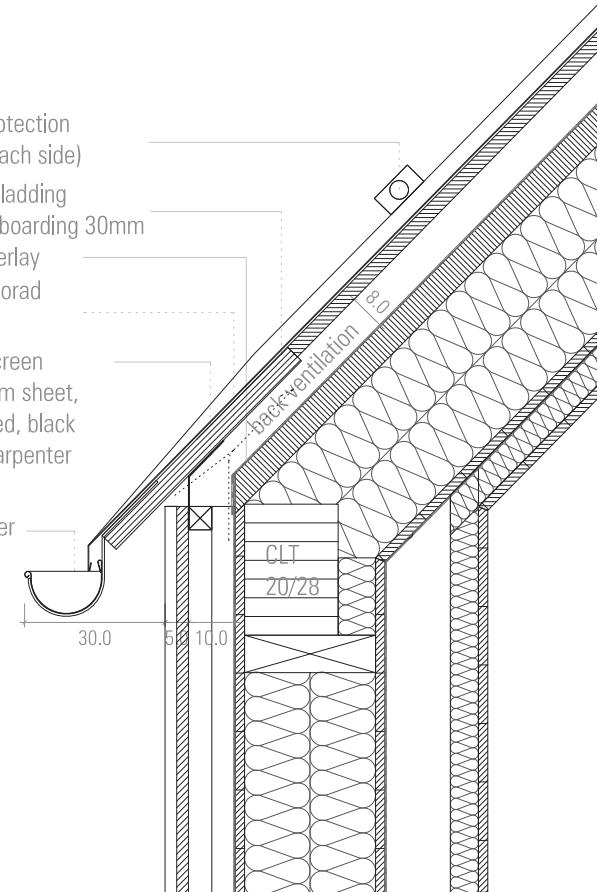
snow protection
(3 rails each side)

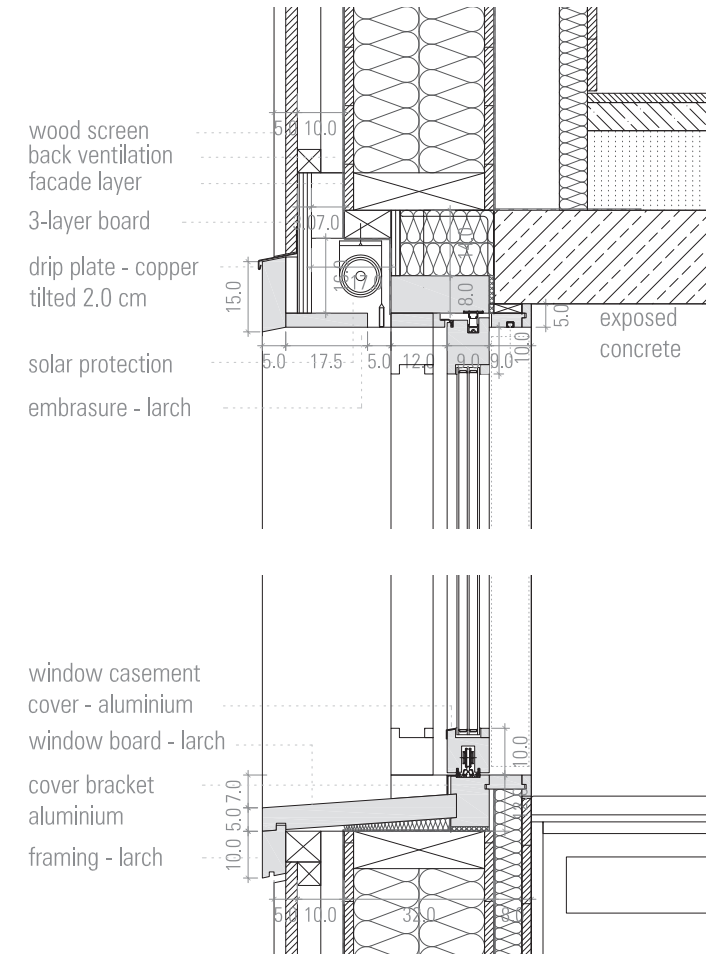
copper cladding
on a full boarding 30mm

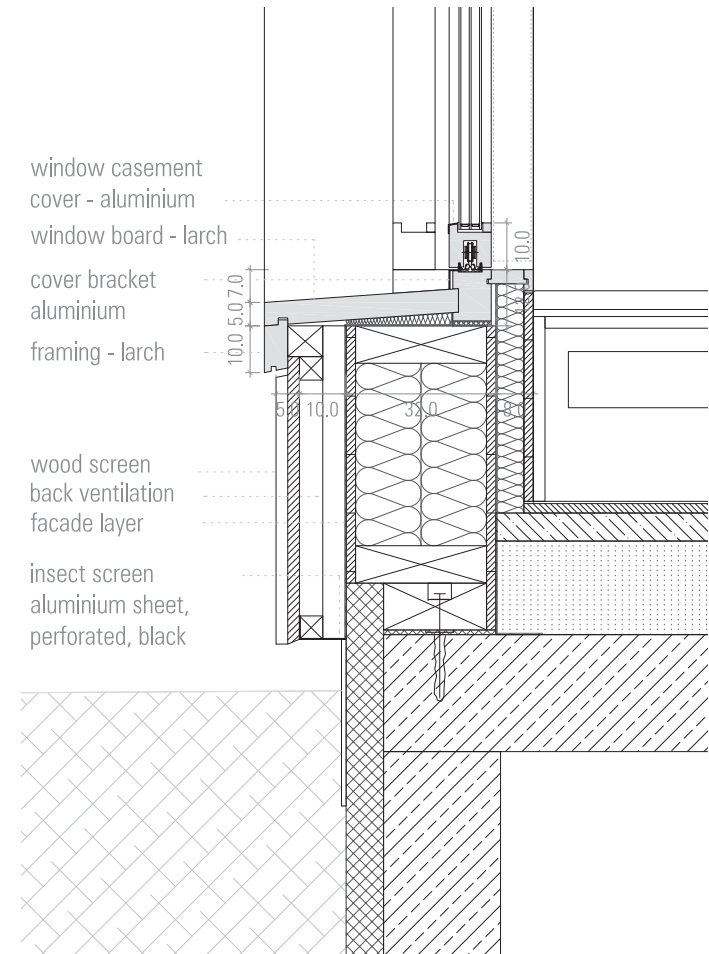
roof underlay
3-layer borad
42mm

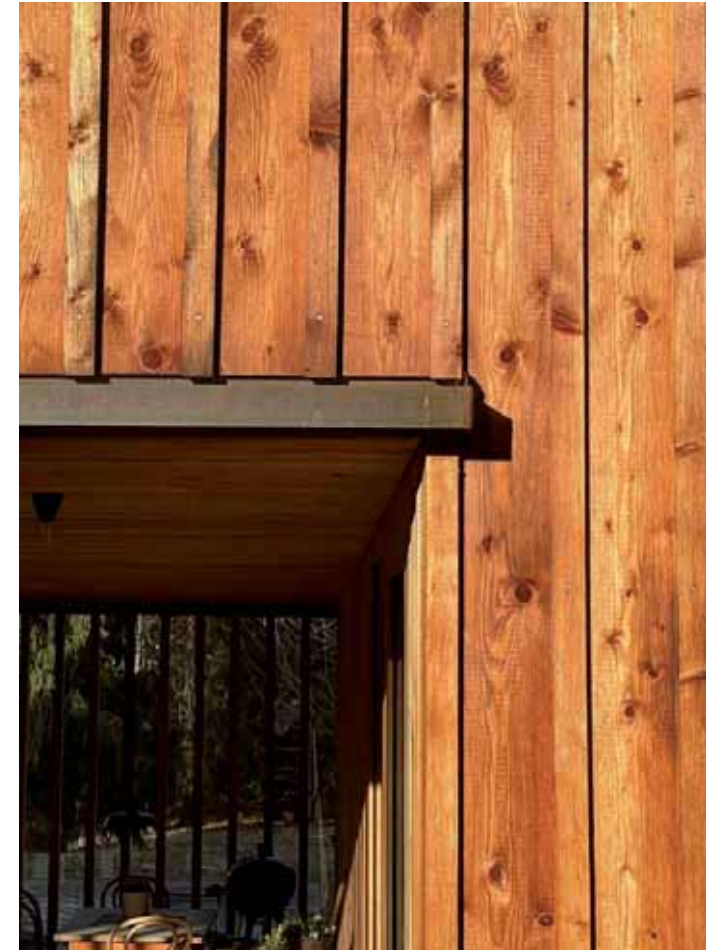
insect screen
aluminium sheet,
perforated, black
by the carpenter

rain gutter
- copper

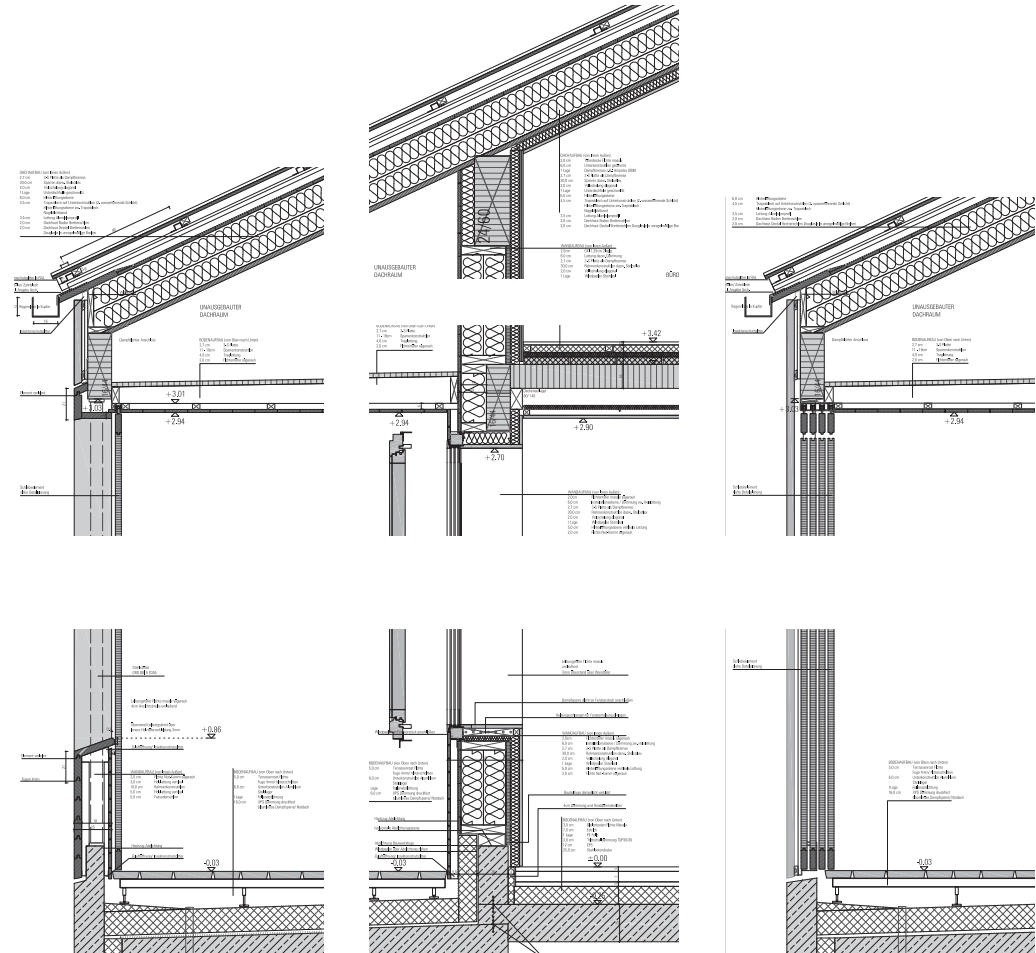


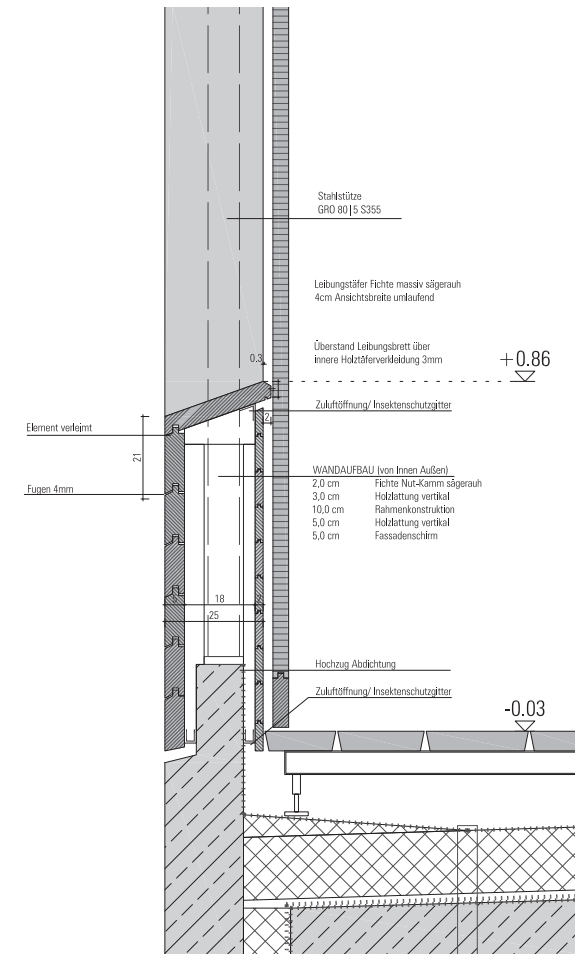




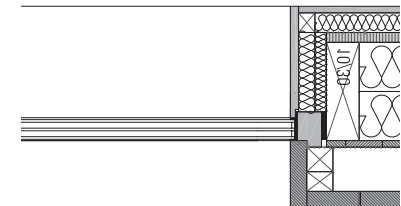
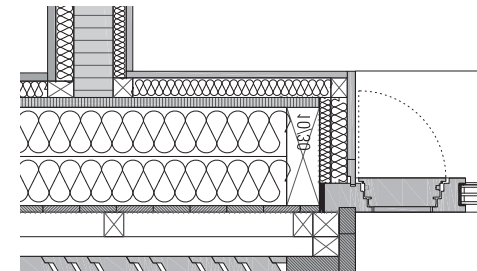
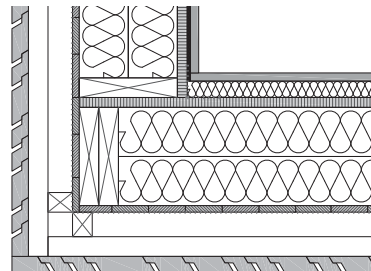
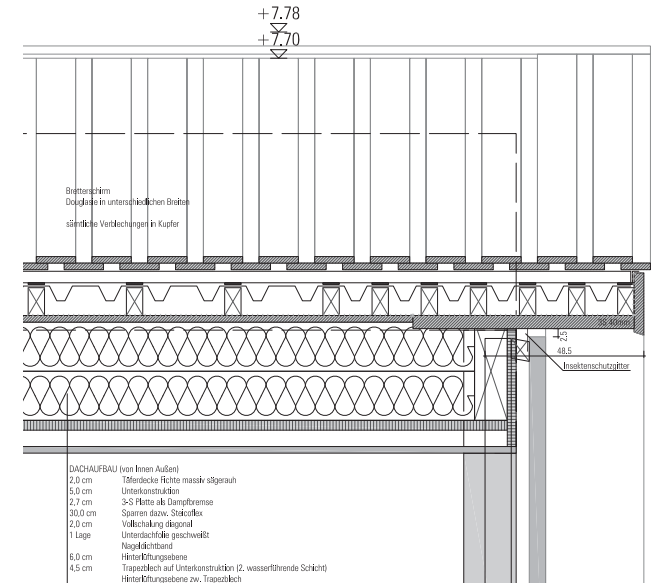
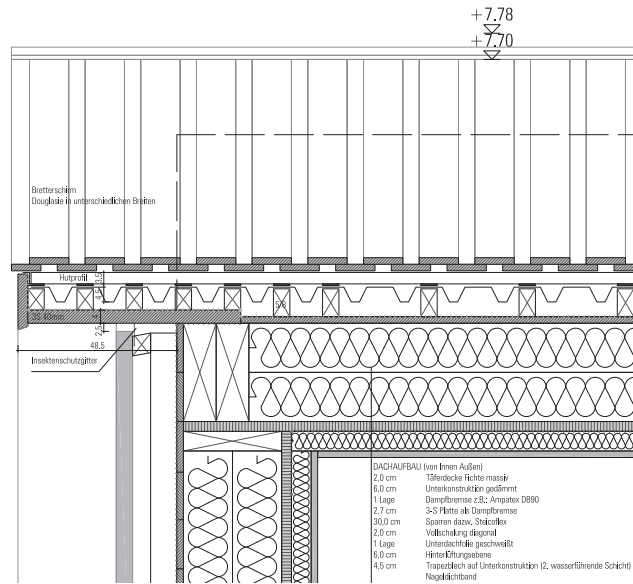










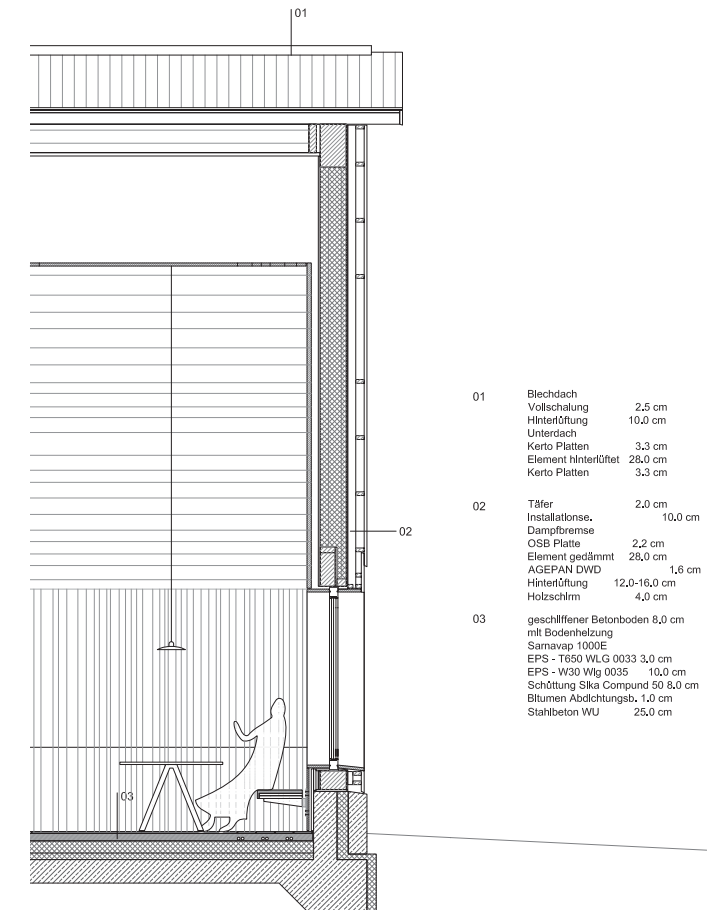


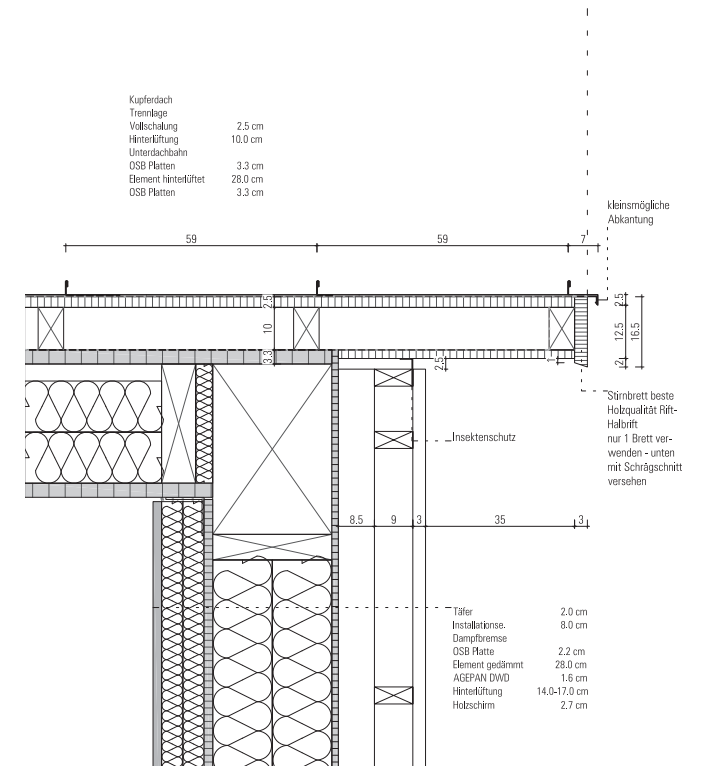
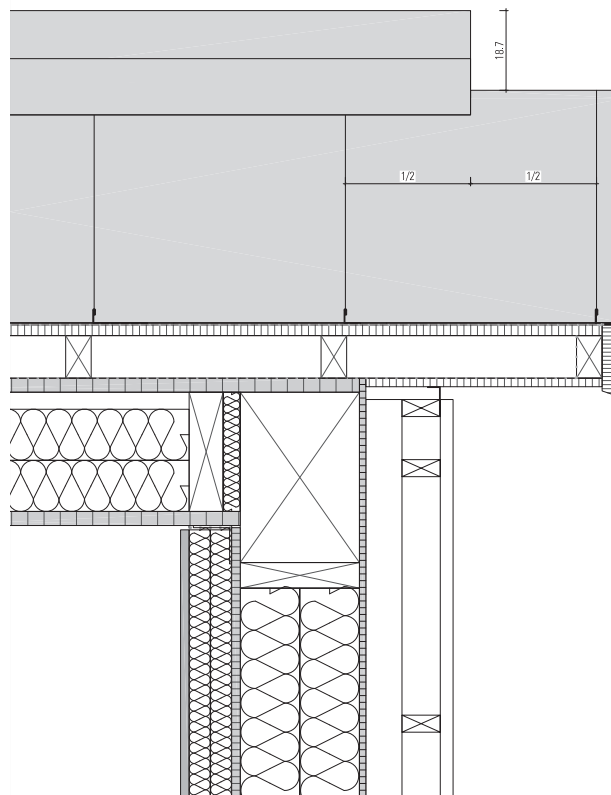


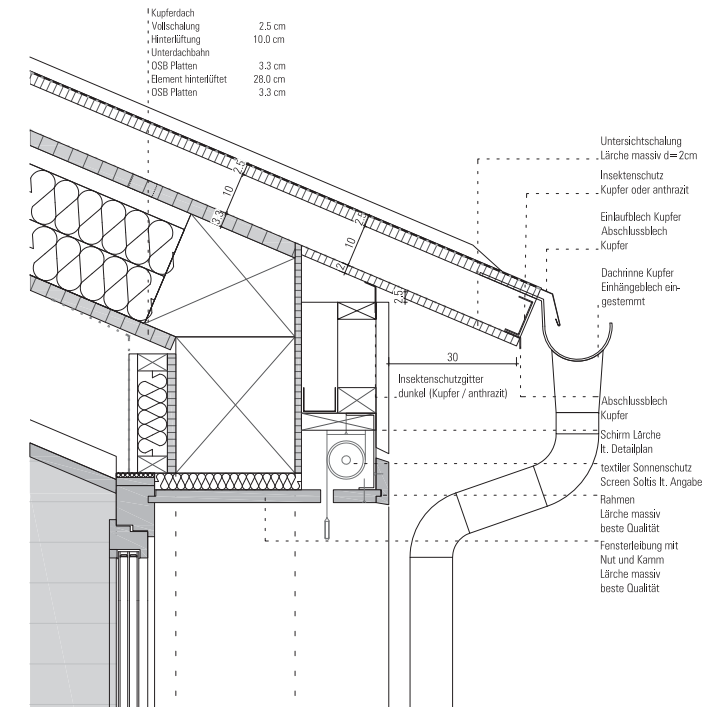
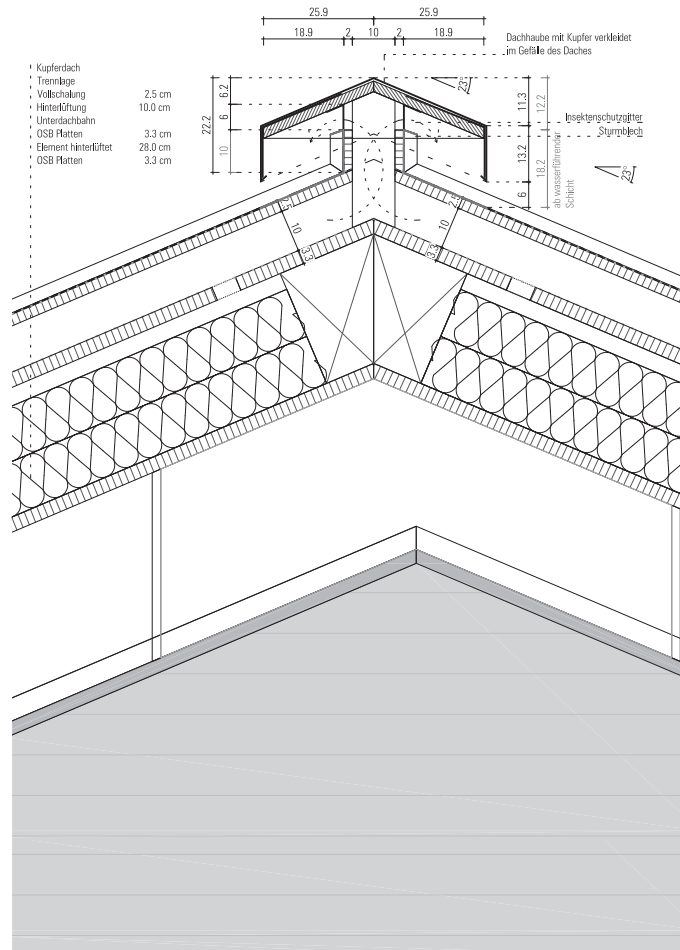






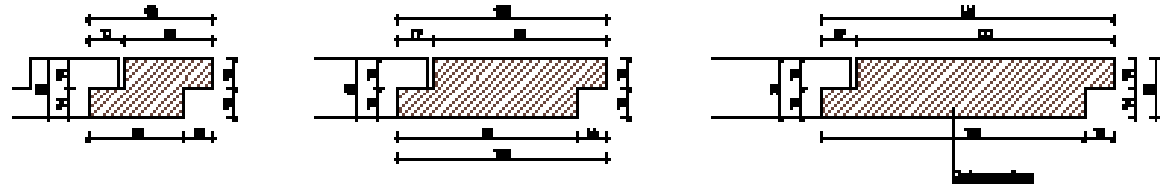




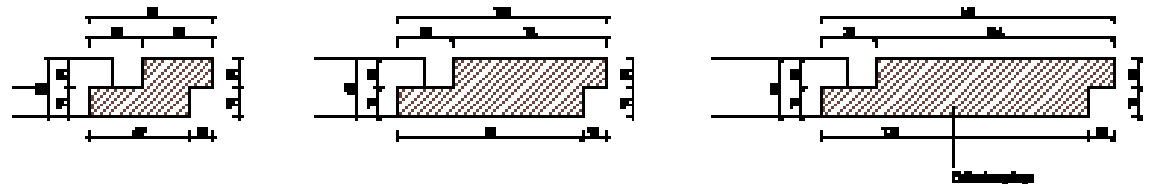




Fassadenblech (27)
 Länge variabel
 Höhe 31 mm



Fassadenblech (28)
 Länge variabel
 Höhe 34 mm



Minimale vertikale verspannte Holzlamellen (29 + 30)
 Länge variabel
 27% - 82 mm Kerfhöhe
 67% - 100 mm Kerfbreite
 30% - 100 mm Kerfbreite

- Kerfhöhe klein: für mittig geschraubt, für Klammern im Feld
- Kerfhöhe groß: (100mm) für geschraubt, für Klammern im Feld

